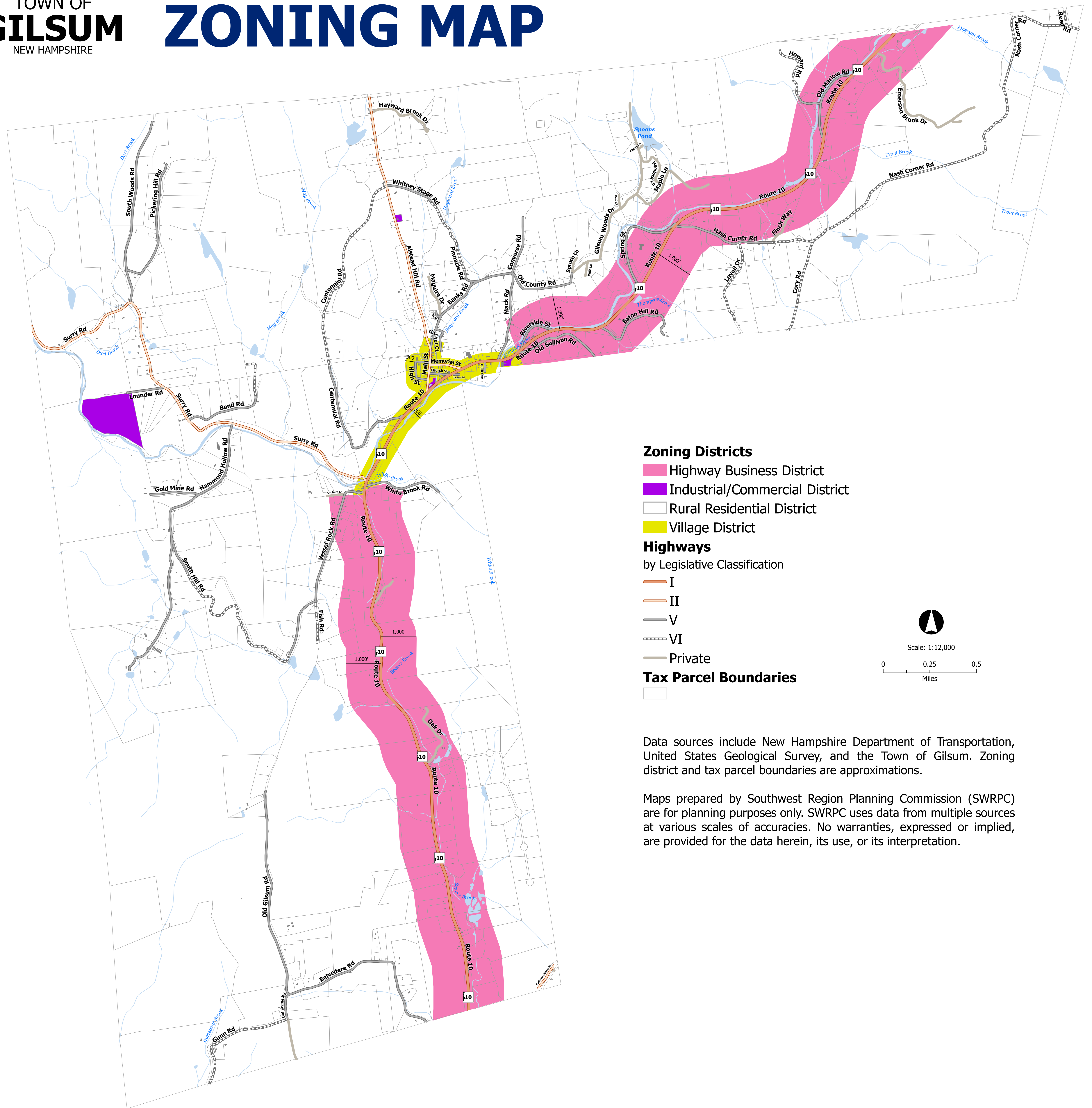


ZONING MAP



Zoning Districts

- Highway Business District
- Industrial/Commercial District
- Rural Residential District
- Village District

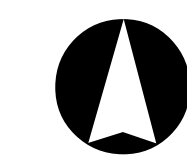
Highways

by Legislative Classification

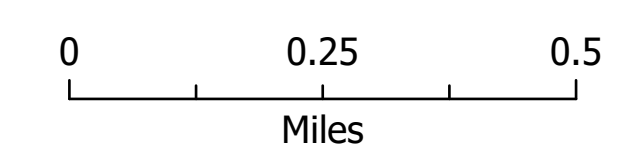
- I
- II
- V
- VI
- Private

Tax Parcel Boundaries

-



Scale: 1:12,000



Data sources include New Hampshire Department of Transportation, United States Geological Survey, and the Town of Gilsum. Zoning district and tax parcel boundaries are approximations.

Maps prepared by Southwest Region Planning Commission (SWRPC) are for planning purposes only. SWRPC uses data from multiple sources at various scales of accuracies. No warranties, expressed or implied, are provided for the data herein, its use, or its interpretation.